



**TOYOTA**

ALWAYS BETTER.



***VIOS***

*A Class Beyond*



# Beauty Meets Innovation



## Exterior Design

*Cutting-edge exterior design that shows its class*



### Front Design

#### STRONG PRESENCE

The body-coloured bumper corner strengthens the feeling of continuity to the side and enhances stance.



### Halogen Headlamps

#### SHARPER LOOK

Sharp-looking headlamps cut through the dark for greater visibility while amplifying the car's sporty look.



### Front Fog Lamp

#### ADDED FLAIR

Redesigned slit-shaped fog lamp bezel matches the car's sporty design.



### LED Combination Lamps\*

#### ADVANCED APPEARANCE

Slim, horizontal combination lamps combined with a black garnish contribute towards a more low-slung appearance.



### Daytime Running Light\*

#### EXTRA INTENSITY

Daytime running light incorporated into the grille shape adds a bolder look.



### Alloy Wheel

#### AESTHETICALLY ASTOUNDING

With stepped spokes and machine finished graphics, the 15-inch alloy wheel features a solid appearance.

Details and specifications may differ from pictures shown depending on models.

*\*For Automatic only*





## Interior Design

*State-of-the-art interior design with an iconic presence*



### **Redesigned Seat Upholstery**

#### **CLASSY COMFORT**

The bold yet delicate lines of the upholstery material exudes refined elegance.



### **Stylish Instrument Panel**

#### **DETAILED DESIGN**

Contrast between the lower and upper panel convey roominess that's greater than its actual size.



### **Multi-Function Steering Wheel\***

#### **EASY OPERATION**

The electronically-assisted steering wheel with audio control buttons lets you keep your eyes on the road.



### **Shift Housing**

#### **QUALITY FINISH**

A piano black finish is complemented by metallic ornaments on either side providing a classy appearance.



### **Cabin Space**

#### **RELAXING SPACE**

With the widest width in its class, rear passengers can enjoy refined cabin comfort.



### **Luggage Side Trim**

#### **ADDED CONVENIENCE**

The bumps on the surface have been reduced resulting in a cleaner design.

Details and specifications may differ from pictures shown depending on models.

*\*For Automatic only*

# Driving Performance

***Satisfying power and driving performance***



## ***Improved Coil Springs and Shock Absorbers***

Superior ride comfort is achieved with the reliable strut type front suspension and Torsion beam type rear suspension.



## ***1.5L Dual VVT-i Engine***

It offers sufficient capacity, outstanding fuel efficiency and a smooth delivery of power and torque.



## ***Continuously Variable Transmission (CVT)\****

Smooth acceleration is achieved with a 7-Speed CVT that provides seamless gear shift.



## ***Low Noise and Vibration***

Noise-dampening acoustic glass\* and specially designed silencers, carpets and engine mounts minimize cabin noise and vibration.

Details and specifications may differ from pictures shown depending on models.

***\*For Automatic only***



# Brilliant Features

## New and improved features



### Optitron Meters with LCD Display\*

#### BETTER VISIBILITY

Designed not only to appear modern and advanced but also to provide high visibility.



### Paddle Shifters\*

#### CONTROL ACCELERATION AT YOUR FINGERTIPS

It enables manual control of the CVT for shorter shift times and faster response.



### Power Retractable Wing Mirror

#### EXTENDED VIEW

Adjustable wing mirrors for better viewing can be retracted when parked.



### Exclusive Audio

#### CABIN ENTERTAINMENT

Audio system allows users to play music from their portable audio device via USB, AUX or Bluetooth.

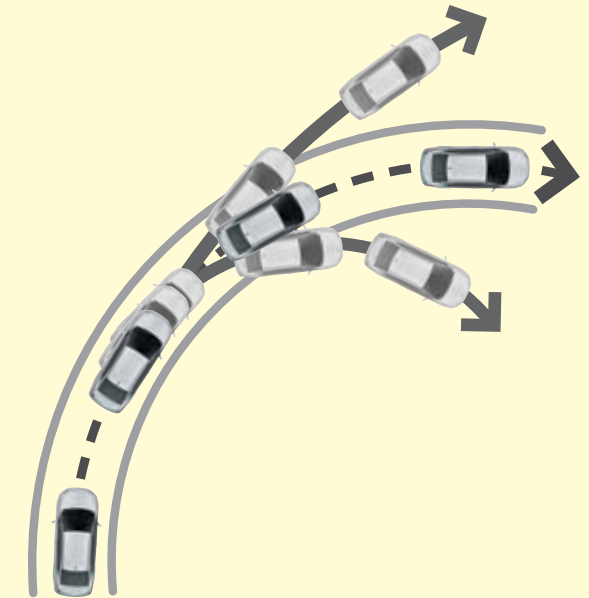
# Safety Features

**Unparalleled safety for everybody**



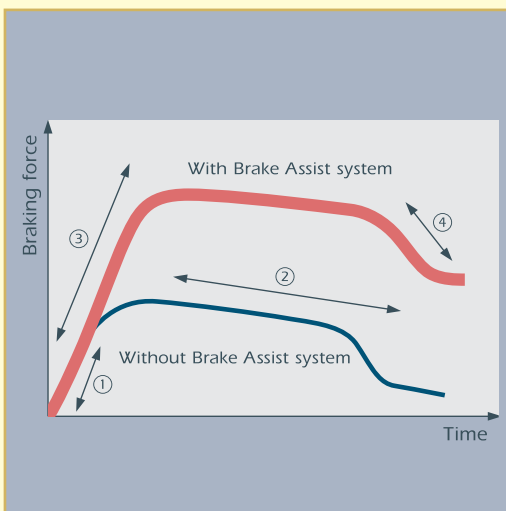
## 7 SRS Airbags

More airbags for added protection in the unlikely event of a collision for both driver and passengers.



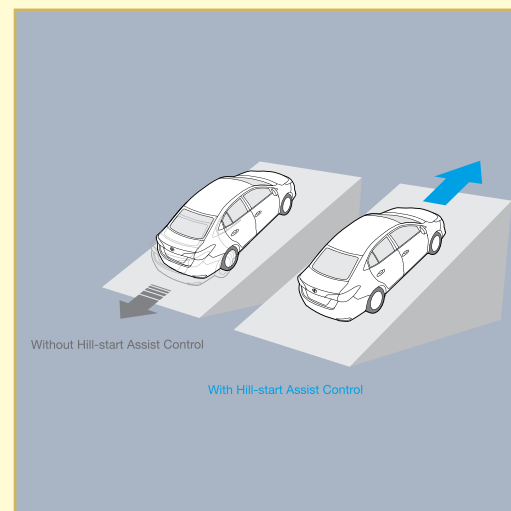
## Vehicle Stability Control

When traction is lost during cornering, automatic wheel braking and engine power reduction are applied to stabilize the vehicle.



## Brake Assist

Brake assist creates more braking force to reduce stopping distance.



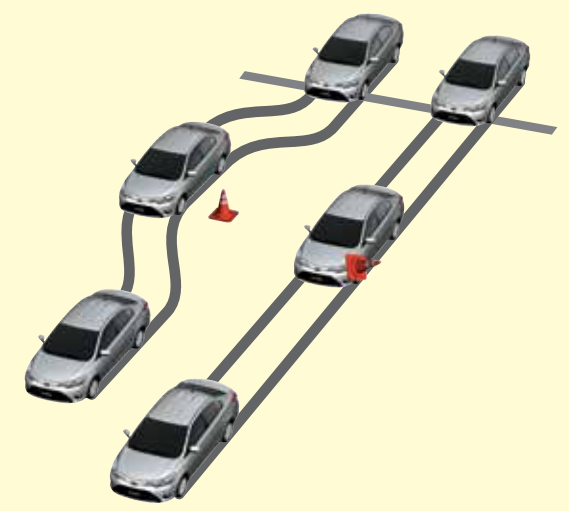
## Hill-start Assist Control

HAC temporarily applies the brakes to the four wheels in order to prevent the vehicle from rolling downhill when the driver switches from the brake to accelerator pedal.



## Impact-Absorbing Chassis

The car's strong body structure is designed to absorb and disperse energy to keep occupants safe.



## Anti-Lock Braking System with Electronic Brake Force Distribution

The system automatically adjusts braking pressure between wheels to free lock up during hard braking or emergency stops.

# Specifications

		1.5 5-Speed Manual	1.5E CVT Automatic
<b>Dimensions and Weight</b>			
Overall Length / Width / Height	mm	4,425 / 1,730 / 1,475	
Wheelbase	mm	2,550	
Tread Front / Rear	mm	1,480 / 1,470	
Min. Turning Radius	mm	5.1	
Ground Clearance	mm	133	
Curb Weight	kg	1,030 - 1,065	1,075 - 1,105
Gross Weight	kg	1,550	
Fuel Tank Capacity	litre	42	
<b>Engine and Transmission</b>			
Engine Type		4-Cylinder in-line 16-valve DOHC with DUAL VVT-i (Timing Chain)	
Capacity	cc	1,496	
Bore x Stroke	mm	72.5 x 90.6	
Max. Output	hp / rpm	106 / 6,000	
Max. Torque	Nm / rpm	140 / 4,200	
Transmission		5-Speed Manual	CVT with 7-Speed Sequential Shift
CO <sub>2</sub> Emission	g / km	131	
<b>Performance</b>			
Top Speed	km / h	180	170
<b>Chassis</b>			
Suspension	Front / Rear	MacPherson Strut / Torsion	
Brake	Front / Rear	Ventilated Disc / Drum	Ventilated Disc / Solid Disc
Tyre Size		185 / 60R15	

# Class-Leading Features

<b>Exterior</b>			
Front Fog Lamps	✓		✓
High Mount Stop Lamps	✓		✓
Side Turn Signal Lamps on Wing Mirrors	✓		✓
Power Adjustable Wing Mirrors	✓		✓
Wireless Door Lock	✓		✓
Power Retractable Wing Mirror	✓		✓
Daytime Running Lights (DRL)	X		✓

Interior

Steering Wheel with Audio Control	X	✓
Optitron Speedometer	X	✓

Safety

SRS Airbags	D + P + SIDE + D-KNEE + CSA (7 SRS Airbags)	
Electronic Brake Force Distribution	✓	✓
ISO-Fix Child Restraint System	✓	✓
3-Point Seat Belts for Rear Seats	✓	✓
Brake Assist (BA)	✓	✓
Vehicle Stability Control (VSC)	✓	✓
Hill-start Assist Control (HAC)	✓	✓
Anti-Lock Braking System (ABS)	✓	✓
Immobiliser	✓	✓
Alarm	X	✓
Reverse Sensors	X	✓

Distinct Colours



Super White (040)



Silver Metallic (1D4)



Gray Metallic (1G3)



Dark Blue Mica Metallic (8W7)



Red Mica Metallic (3R3)



Quartz Brown Metallic (4W0)



Attitude Black Mica (218)

Addition of extra features may change figures in this chart.

NBT (Brunei) SDN BHD reserves the right to alter any details of specifications and equipment without notice.

Note:

Vehicles displayed and specifications detailed in this catalogue may vary from models and equipment available in your area.

Actual interior features and colours may differ from pictures shown. Vehicle body colour might differ slightly from the printed photos in this catalogue.

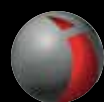






**TOYOTA**

*ALWAYS BETTER.*



Inchcape

**NBT**

عين. بي. تي. (بروني) سنديرين برحد  
(BRUNEI) SDN BHD

**Head Office :** NBT (Brunei) Sdn Bhd. Km 4, Jalan Gadong, Bandar Seri Begawan BE4119. Tel: 2433777 Fax: 2421539.

**K.B. Branch :** Lot 5754 & 5755, Kompleks Perindustrian, Jalan Setia Diraja, Kuala Belait KA1931. Tel: 3337288, 3337388, 3333046 Fax: 3341840.

**Bunut Branch :** Km 8, Simpang 664, Jalan Tutong BF1320. Tel: 2652459, 2652460, 2652461 Fax: 2652463.

**Customer Relations Department :** Tel: 2427488 Email: [customercare@nbt-brunei.com](mailto:customercare@nbt-brunei.com)



[www.nbt-brunei.com](http://www.nbt-brunei.com)



**Toyota Brunei**



**ToyotaBrunei**